

MODEL UBS

UPBLAST BELT DRIVE

PROPELLER ROOF EXHAUSTER

APPLICATION

Model UBS is a high capacity roof mounted exhauster rated from 7,000 to 31,480 CFM. They are general ventilation units designed to economically remove large volumes of air, fumes and vapors from commercial and industrial buildings such as warehouses, manufacturing and assembly plants, chemical plants, foundries and paper mills.

Straight-through air flow design results in maximum exhaust efficiency. During operation, the high air flow velocity opens butterfly dampers and helps prevent rain or snow from entering. Dampers close and cover the venturi opening when unit is not in use.

The roof mounted location eliminates interference with processes and equipment inside the building. It also permits locating the exhauster over a source of heated or contaminated air, allowing direct upward venting to the outside, unlike wall mounted exhausters which may move contaminated air through adjacent work spaces.

Belt drive units usually operate more quietly and afford easier performance adjustments, while direct drive models require less maintenance.

CONSTRUCTION

Panel Assembly

- Heavy-gauge G90 galvanized steel panel on all sizes.
- One piece venturi for maximum efficiency.
- Welded and bolted support structure of schedule 40 galvanized pipe.
- Motor/bearing plates of minimum 10 gauge galvanized steel.
- Lifting eyes standard for ease of installation.

Windband/Butterfly Dampers

- Heavy-gauge galvanized steel windband.
- Galvanized steel butterfly dampers standard.
- Galvanized rain channel drains water from damper area to roof.
- Corrosion resistant.

DIMENSIONAL DATA

MODEL UBS	A	B	C	D	E	F	METAL GAUGES		Average Ship Wt. Lbs.
							WIND SHROUD	FAN PANEL	
24	30	26	20	32	28	31	18	16	250
30	36	29	21	38	34	37	18	16	325
36	42	31	21	44	40	43	18	16	350
42	48	34	22	50	46	49	18	16	425
48	54	37	26	56	52	55	18	16	450

A - Outside Diameter of Windband.

B - Height of Unit Above Curb Cap.

C - Maximum Depth of Unit Below Top of Curb, Actual Depth Varies with Motor Size.

D - Inside Dimension of Square Curb Cap.

E - Minimum Inside Dimension of Curb Opening Required for Adequate Clearance of Fan Frame.

F - Outside Dimension of Factory Built Prefab Curb.



Propeller

- Steel hub plate with steel taper lock bushing.
- Die formed, heavy gauge, epoxy coated, steel blades.

Drives

- Sized for minimum 150% of drive horsepower.
- Single belt adjustable pitch sheaves through 3 HP.
- Two belt fixed pitch sheaves on 5 HP units.
- Adjustable tension rods for belt adjustment.
- Nonstatic oil resistant v-belts.
- Keyed, turned, ground and polished shafts.

Bearings

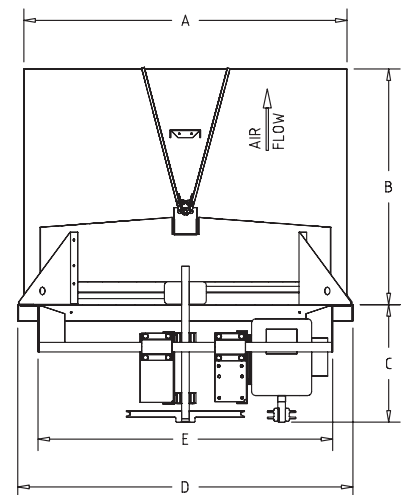
- Bearings designed for minimum 200,000 hour life.
- Cast iron self-aligning pillow block ball bearings.
- Bearings are sealed, prelubricated with relube fittings.

Motors

- Brands are nationally recognized and locally serviced.
- Open drip-proof construction is standard.



LISTED POWER ROOF VENTILATOR
UL STANDARD 705



ALL DIMENSIONS IN INCHES, WEIGHTS IN POUNDS. OD IS OUTSIDE DIMENSION OF SQUARE CURB AND DAMPER. DUE TO CONTINUING RESEARCH, BREIDERT RESERVES THE RIGHT TO CHANGE SPECIFICATIONS WITHOUT NOTICE.