

# MODEL RED

## DOWNBLAST DIRECT DRIVE

## CENTRIFUGAL ROOF EXHAUSTER

### APPLICATION

Model RED direct drive units are used to exhaust air from all types of commercial and institutional buildings such as hospitals and health care facilities, schools, recreational buildings, machinery and equipment rooms, offices, retail stores and similar applications.

The nonoverloading wheel with its higher static pressure capability makes this unit suitable for either ducted or nonducted applications. Its roof mounting permits location near the area to be ventilated, allowing short duct runs and more efficient operation.

The spun aluminum exterior provides an attractive appearance and is compatible with belt driven Model DB and companion gravity units to make up a complete ventilation system. Direct drive units use smaller diameter wheels, resulting in low sound levels and quiet operation. They have no belts or fan bearings to maintain or adjust and consequently require very little maintenance.

### CONSTRUCTION

#### Housing

- Curb cap has prepunched mounting holes for ease of installation.
- Fan plate isolates motor compartment from contaminated exhaust air.
- Spun aluminum hood and skirt for weather protection and attractive appearance.
- Heavy-gauge motor support for rigidity and strength.
- Neoprene isolators for reduction of vibration and sound.
- Quick access to motor compartment for ease of maintenance.
- Conduit passage for easy electrical connection from below roof.
- Aluminum birdscreen and disconnect are included on standard models.

#### Centrifugal Wheel

- Non overloading for safe operation in ducted systems.
- Backward inclined wheels constructed of noncorrosive aluminum.
- Statically and dynamically balanced for smooth operation.

#### Speed Controllable Motors

- Standard motors are single speed, speed controllable and drip-proof.
- All motors are rated for continuous duty.
- Disconnect is standard with single speed drip-proof motors.
- Motors ship mounted as standard.

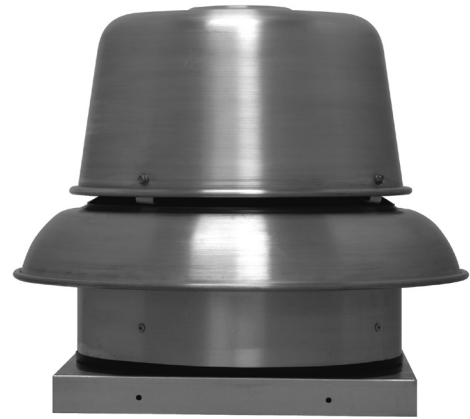
### DIMENSIONAL DATA

MODEL RED	A	B	C	D	ROOF OPENING	Average Ship Wt. Lbs.
6	21 3/4	12	16 1/2	1 3/4	11 3/4	50
8	21 3/4	15 3/4	16 1/2	1 3/4	11 3/4	50
10	21 3/4	17 1/4	16 1/2	1 3/4	11 3/4	50
12	33 1/8	23 1/2	24	2	19 1/4	120
15	33 1/8	23 1/2	24	2	19 1/4	124

MODEL RED	RECOMMENDED 12" HIGH MOUNTING CURB		RECOMMENDED GRAVITY DAMPER		115 VOLT SPEED CONTROL	
	OD	STOCK NO.	OD	STOCK NO.	STOCK NO.	STOCK NO.
6	14 3/4	611214	11	411011	2727.1	N/A
8	14 3/4	611214	11	411011	2727.1	N/A
10	14 3/4	611214	11	411011	2727.1	N/A
12	22 1/4	611222	18	411018	2727.1	2828.1
15	22 1/4	611222	18	411018	N/A	2828.1

**SPEED CONTROL 2727.1 MAX 1/3 HP-5 AMP 120V**  
**2828.1 MAX 1/2 HP-10 AMP 120V**

ALL DIMENSIONS IN INCHES, WEIGHTS IN POUNDS. OD IS OUTSIDE DIMENSION OF SQUARE CURB AND DAMPER. DUE TO CONTINUING RESEARCH, BREIDERT RESERVES THE RIGHT TO CHANGE SPECIFICATIONS WITHOUT NOTICE.



### ACCESSORIES

#### Solid State Speed Control:

Control is matched to the motor and blower wheel to allow continuous reduction in performance allowing adjustments of airflow for system balancing. CFM is reduced in direct proportion to motor speed reduction. Speed control is only available for 115 volt single phase. Exhauster performance can be controlled from the ventilated area.

### AMCA SEAL



Breidert Air Products, Div. of Soler & Palau Ventilation Group certifies that the Models RED shown herein are licensed to bear the AMCA Seal. The ratings shown are based on test and procedures performed in accordance with AMCA Publication 211 and AMCA Publication 311 and comply with the requirement of the AMCA Certified Ratings Program.



LISTED POWER ROOF VENTILATOR  
UL STANDARD 705

