

MODEL KSF

BELT DRIVE CENTRIFUGAL FILTERED ROOF SUPPLY FAN

APPLICATION

Models KSF fans are primarily used for filtered make-up air in kitchen hood applications but may also be specified for make-up air in commercial and industrial applications such as manufacturing and assembly areas.

Model KSF's rugged design with heavy-gauge galvanized construction provides maximum weather protection, long life and the utmost in performance efficiency. The forward curved centrifugal blower provides efficient air flow at low sound levels.

Filters are washable and are reusable to reduce maintenance costs. Quick release hood latches make routine cleaning and maintenance fast and easy.

CONSTRUCTION

Blower

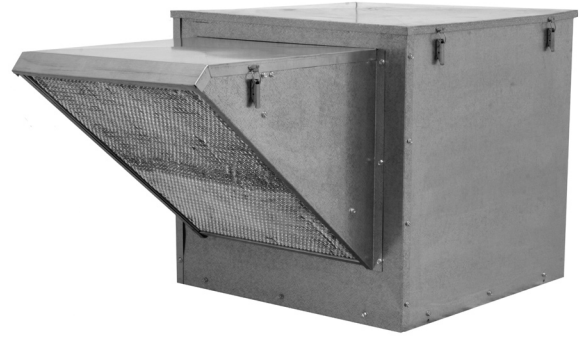
- Statically and dynamically balanced forward curved wheel.
- Prepunched mounting holes.
- Conduit opening for wiring from below unit.
- Disconnect switch is standard equipment.

Hood

- Heavy-gauge galvanized steel.
- Quick-release latches for removal from housing.
- Insulated for sound absorption and moisture barrier.
- 1 inch washable aluminum mesh filters.

Drives

- Machined cast iron adjustable motor pulleys standard through 3 HP.
- Pivoting motor plate for belt tensioning.
- Static resistant v-belts.



Bearings

- Heavy-duty ball bearing type.
- Prelubricated and permanently sealed.

Motors

- Open drip-proof construction is standard.
- Optional motor enclosures and types can be specified.

AMCA SEAL



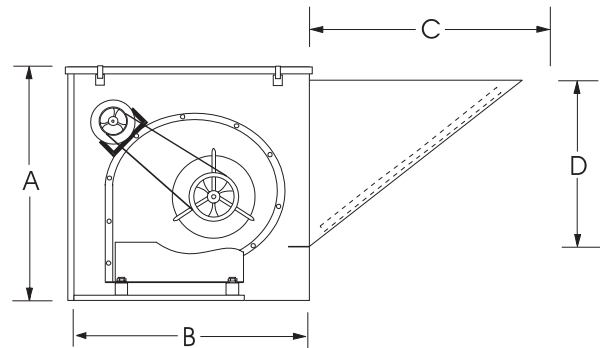
Breidert Air Products, Div. of Soler & Palau Ventilation Group certifies that the Models KSF shown herein are licensed to bear the AMCA Seal. The ratings shown are based on test and procedures performed in accordance with AMCA Publication 211 and AMCA Publication 311 and comply with the requirement of the AMCA Certified Ratings Program.



LISTED POWER ROOF VENTILATOR
UL STANDARD 705

DIMENSIONAL DATA

MODEL KSF	A	B	C	D	ROOF OPENING	Average Ship Wt. Lbs.
9	23 1/4	24 1/2	17 1/2	18	19 1/2	215
10	27 1/4	28 1/4	21	21	23 1/2	245
12	32 1/2	32 1/2	26 3/8	26 3/8	28	255
15	37 1/4	32 1/2	31 1/2	31 1/2	28	310
18	41 1/4	36 1/2	35 1/2	35 1/2	32	350



MODEL KSF	RECOMMENDED 12" HIGH MOUNTING CURB		RECOMMENDED GRAVITY DAMPER		FAN LESS MOTOR & DRIVE
	OD	STOCK NO.	OD	STOCK NO.	STOCK NO.
9	22 1/2	2302.12.9CSF	16	S3GA16CB	KSF09LMDS
10	26 1/2	2302.12.10CSF	20	S3GA20GB	KSF10LMDS
12	31	2302.12.15CSF	24	S3GA24CB	KSF12LMDS
15	31	2302.12.15CSF	24	S3GA24CB	KSF15LMDS
18	35	2302.12.18CSF	27	S3GA27CB	KSF18LMDS

ALL DIMENSIONS IN INCHES, WEIGHTS IN POUNDS. OD IS OUTSIDE DIMENSION OF SQUARE CURB AND DAMPER. DUE TO CONTINUING RESEARCH, BREIDERT RESERVES THE RIGHT TO CHANGE SPECIFICATIONS WITHOUT NOTICE.