

MODEL ARE/ARS

DOME DIRECT DRIVE PROPELLER EXHAUST/INTAKE ROOF VENTILATOR

ARE = Exhaust

ARS = Supply

APPLICATION

The AR series offers powerful axial intake (ARS) or exhaust (ARE) performance in a roof mount design that is compact, lightweight and easy to install.

The AR series is an excellent choice for factories, shops, restaurants, bathrooms, offices, schools and other similar applications where light to moderate static pressures are present.

The low contour designs and all aluminum housing provides a modern, clean appearance in addition to excellent performance and durability. The direct drive design has no belts or fan bearings to maintain or adjust and consequently requires very little maintenance.

CONSTRUCTION

Housing

- Heavy-gauge all aluminum housing.
- Exclusive U-Spring suspension compensates for both radial and lateral movement and provides 44% better vibration isolation than rubber isolators.
- External wiring chase for easy connection.
- Quick access to motor compartment for easy maintenance.

Propeller

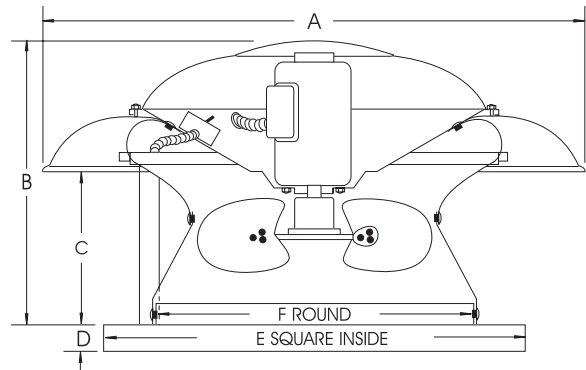
- Attaches directly to motor shaft for maximum efficiency.
- Precision pitched, heavy-gauge aluminum blades with steel hub. Blades are designed for specific exhaust or supply requirements.

Speed Controllable Motor

- Standard motors are single speed, speed controllable and drip-proof.
- All motors are rated for continuous duty.
- Disconnect is standard on ODP motors.
- Motors are shipped assembled with factory test run assurance.

DIMENSIONAL DATA

MODEL ARE/ARS	A	B	C	D	E	F	Average Ship Wt. Lbs.
10	21	13	7	2	20	12 3/4	25
12	28	16	8	3	24	15 3/4	42
16	32	18	8 1/2	3	28	19 3/4	55

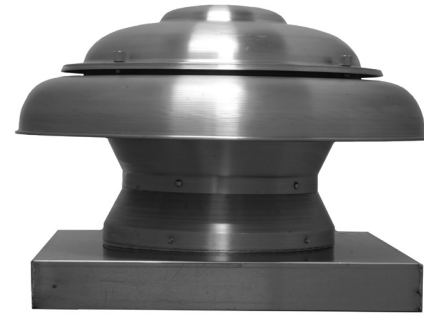


MODEL ARE/ARS	RECOMMENDED 12" MOUNTING CURB		RECOMMENDED DAMPER		115 VOLT SPEED CONTROL
	OD	STOCK NO.	OD	STOCK NO. ARE / ARS	5 AMP STOCK NO.
10	18 1/2	91812221	14	411014 / S3GA12CB	2727.1
12	22 1/2	92212221	18	411018 / S3GA18CB	2727.1
16	26 1/2	92612221	22	411022 / S3GA22CB	2727.1

ARE = Exhaust ARS = Supply

SPEED CONTROL 2727.1 MAX 1/3 HP-5 AMP 120V
2828.1 MAX 1/2 HP-10 AMP 120V

ALL DIMENSIONS IN INCHES, WEIGHTS IN POUNDS. OD IS OUTSIDE DIMENSION OF SQUARE CURB AND DAMPER. DUE TO CONTINUING RESEARCH, BREIDERT RESERVES THE RIGHT TO CHANGE SPECIFICATIONS WITHOUT NOTICE.



ACCESSORIES

Solid State Speed Control:

Is matched to the motor and blower wheel to allow continuous reduction in performance allowing adjustments of airflow for system balancing. CFM is reduced in direct proportion to motor speed reduction. Speed control is only available for 115 volt single phase. Exhauster performance can be controlled from the ventilated area.

PERFORMANCE ASSURANCE

- Units are tested in accordance with AMCA 301 (Sound) and AMCA 210 (Air).



LISTED POWER ROOF VENTILATOR
UL STANDARD 705