

# MODEL "BTU", "BRU" & "BST" GAS-FIRED TUBULAR UNIT HEATERS

## REPLACEMENT PARTS CATALOG

### INDEX

WARRANTY INFORMATION – RETURN GOODS .....	2
BRU/BTU CONVERSION KITS .....	3
HIGH ALTITUDE ADJUSTMENT .....	3
BST-30/75 SEPARATED COMBUSTION REPLACEMENT PARTS .....	4, 5
BRU/BTU-30/90 LOW PROFILE REPLACEMENT PARTS .....	6, 7
BTU-100/400 REPLACEMENT PARTS .....	8, 9, 10, 11
OPTIONAL PARTS .....	12
TERMS .....	13

**IMPORTANT**  
WHEN ORDERING PARTS, PLEASE  
SPECIFY UNIT MODEL NO. AND SERIAL NO.

# IMPORTANT WARRANTY INFORMATION

If you are ordering a replacement part for a unit which you believe to be under warranty, the process is as follows:

- Provide Beacon-Morris with a description of the part or assembly needed and the model and serial number of the unit which experienced failure. If there is a question on the warranty, we can answer it at this point.
- We will enter your order and issue you a R.G.A. (Return Goods Authorization), if applicable, with instructions on how and where to send the defective parts.
- Your invoice will indicate “no charge” pending the return of the applicable defective parts. The invoice may list the R.G.A. number and state: “a R.G.A. has been issued. Reinvoicing will occur if no receipt in 30 days.” However, some parts are to be field scrapped, which the invoice will state accordingly. If parts are received by us within the 30 days, and confirmed as “defective in-warranty”, the transaction will be closed.

If we do not receive the parts within 30 days or our inspection reveals a non-warranty condition, then a subsequent invoice will be generated indicating the appropriate cost and we will no longer accept returns on that R.G.A.

In order to insure the orderly processing of your warranty claim it is **MANDATORY** that certain paper work accompany any and all goods returned to Sterling. It is also mandatory that goods be sent to the proper location.

In order to assure proper handling of these goods we insist that under all circumstances we must formally authorize the return of material to our various facilities. Any material returned without authorization will not be accepted.

In order to insure that your properly authorized returns are accepted at our plant, we ask that you clearly mark any and all shipping papers with an R.G.A. number; we will not accept shipments that do not clearly show R.G.A. number on the outside of the box or crate!

**All returns to be shipped Freight Prepaid. Collect Shipments  
will not be accepted.**

CONSULT OUR CUSTOMER SERVICE DEPT. FOR ANY REPLACEMENT  
PARTS NOT LISTED IN THIS PUBLICATION. LIMITED AVAILABILITY ON  
CERTAIN OBSOLETE EQUIPMENT.  
TEL. 413-564-5423 FAX# 413-572-3764

<b>MINIMUM CHARGE \$35.00 – ORDERS WITH AN INVOICE OF LESS THAN \$35.00 NET WILL BE INVOICED AT \$35.00</b>
---

## CONVERSION KITS “BRU/BTU/BST” SERIES UNITS WITH HOT SURFACE IGNITION CONTROLS

### CONVERTING FROM NAT. GAS TO LP GAS

MODEL NO.	CONVERSION KIT NO.
BRU/BTU-30/75	261R04865
BRU/BTU-90	261R05410
BTU-100/400	261R04867
BTU-350/400*	261R04869

### CONVERTING FROM LP GAS TO NAT. GAS

MODEL NO.	CONVERSION KIT NO.
BRU/BTU/BST-30/75	261R04866
BRU/BTU-90	261R05412
BTU-100/400	261R04868
BTU-175/300**	261R04952

\*For units manufactured prior to June 13, 2001, equipped with White Rodgers gas valve.

\*\*For units manufactured prior to June 13, 2001, equipped with 1/2" inlet and 3/4" outlet Honeywell smart valve.

These kits include components for normal altitude 0-2,000 ft. (610m) conversions only.

Contact customer service for any hi-altitude conversions.

## HIGH ALTITUDE ADJUSTMENTS

Beacon-Morris model “BRU” and “BTU” units may be fired at full input up to 2,000 feet (610m) above sea level.

Above 2,000 feet (610m), manifold pressure must be adjusted on most units.

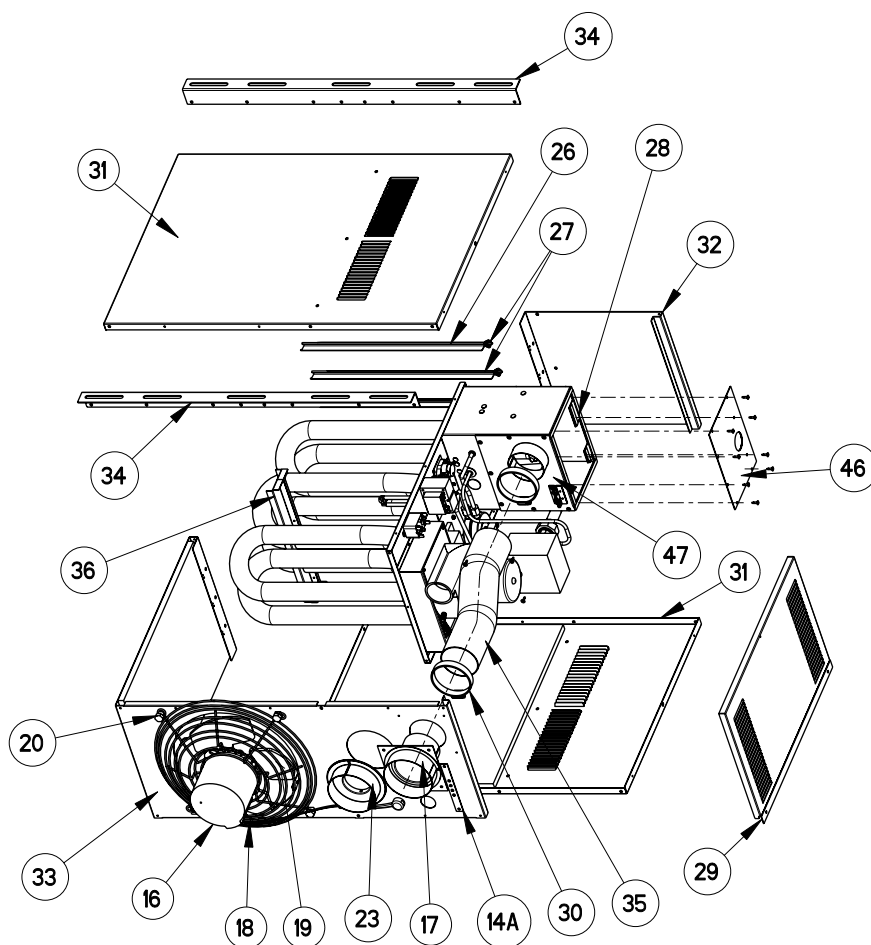
Adjust the gas valve pressure regulator to the pressure shown in the tables below.

Model: “BRU”, “BTU” & “BST” Capacity: 30-90 MBH				
Altitude (Feet)	NATURAL GAS		PROPANE GAS	
	Heating Value* Btu/Cu. Ft.	Manifold Pressure (In. W.C.)	Heating Value* Btu/Cu. Ft.	Manifold Pressure (In. W.C.)
2,000	948	3.2	2278	10.0
2,500	931	3.2	2237	10.0
3,000	914	3.2	2196	10.0
3,500	897	3.1	2156	10.0
4,000	881	3.1	2116	10.0
4,500	865	3.1	2077	9.9
5,000	849	3.0	2039	9.7
5,500	833	3.0	2000	9.6
6,000	818	2.9	1964	9.5
6,500	802	2.9	1927	9.3
7,000	787	2.9	1891	9.2
7,500	771	2.8	1853	9.0
8,000	756	2.8	1817	8.9
8,500	741	2.7	1781	8.7
9,000	726	2.6	1745	8.5
9,500	711	2.6	1709	8.3
10,000	696	2.5	1673	8.1

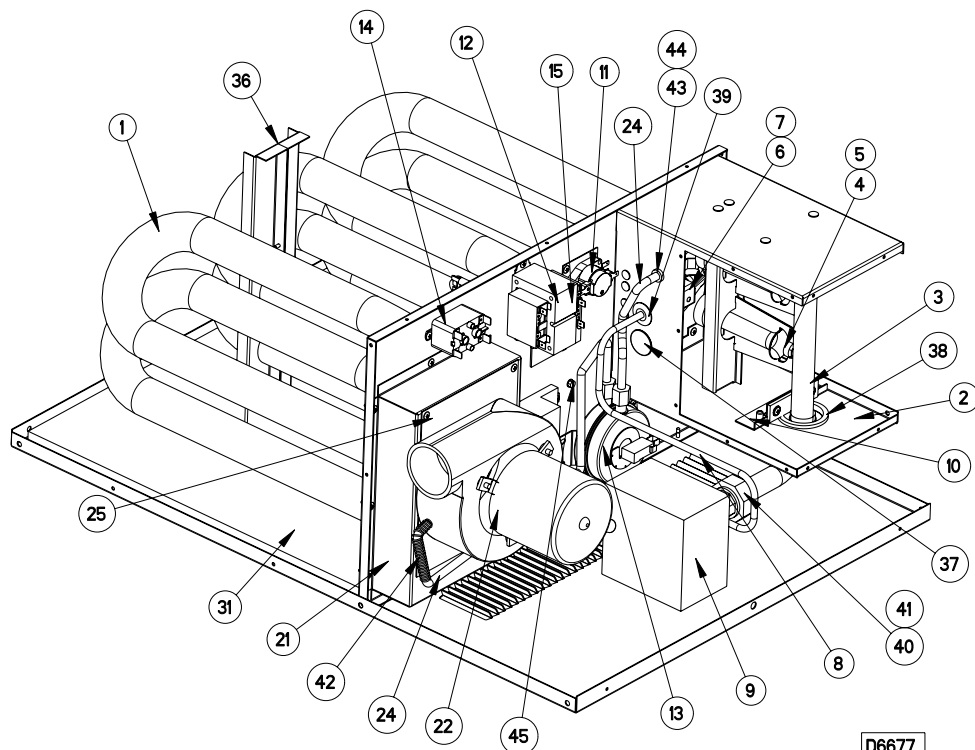
Model: “BTU” Capacity: 100-400 MBH				
Altitude (Feet)	NATURAL GAS		PROPANE GAS	
	Heating Value* Btu/Cu. Ft.	Manifold Pressure (In. W.C.)	Heating Value* Btu/Cu. Ft.	Manifold Pressure (In. W.C.)
2,000	948	3.5	2278	8.6
2,500	931	3.5	2237	8.5
3,000	914	3.3	2196	8.4
3,500	897	3.2	2156	8.4
4,000	881	3.2	2116	8.3
4,500	865	3.2	2077	8.2
5,000	849	3.1	2039	8.1
5,500	833	3.1	2000	8.0
6,000	818	3.0	1964	7.9
6,500	802	3.0	1927	7.7
7,000	787	2.9	1891	7.6
7,500	771	2.9	1853	7.5
8,000	756	2.8	1817	7.4
8,500	741	2.8	1781	7.2
9,000	726	2.7	1745	7.1
9,500	711	2.7	1709	6.9
10,000	696	2.6	1673	6.8

\*Consult local gas utility for actual (Btu/Cu. Ft.) heating value

# MODEL "BST" 30-75 MBH "SEPARATED COMBUSTION" REPLACEMENT PARTS



D6678



D6677

# MODEL “BST” 30-75 MBH “SEPARATED COMBUSTION” REPLACEMENT PARTS

ITEM NO.	“SF” MODEL SIZE (MBH)		30	45	60	75
	ITEM DESCRIPTION		PART NO.			
	NO. OF TUBES, BUNERS ORIFICES REQ'D PER MODEL		2	3	4	5
1	VESTIBULE PANEL/TUBE ASS'Y (HEAT EXCHANGER)		507R06685-001	507R06686-001	507R06687-001	507R06688-001
2	BURNER BOX SUB-ASS'Y		502R06419		502R06420	
3	MANIFOLD		J37R04684-030	J37R04684-045	J37R04684-060	J37R04684-075
4	INSHOT BURNER		J37R04693			
5	STANDARD ORIFICE	NATURAL GAS	J36R04694-001			
		PROPANE (LP) GAS	J36R04694-004			
6	PILOT BURNER ASS'Y	NATURAL GAS	J38R03421-001			
		PROPANE (LP) GAS	J38R03421-002			
7	PILOT MOUNTING BRACKET		252R06603			
8	PILOT TUBING		257R06605	257R06604	257R06605	257R06604
9	HONEYWELL SV9540 GAS VALVE, SINGLE STAGE	NATURAL GAS	J28R04979-001			
		PROPANE (LP) GAS	J28R04979-002			
10	MANIFOLD MOUNTING ANGLE (2 PER UNIT)		252R06423			
11	FAN TIME DELAY SWITCH		J11R00366			
12	TRANSFORMER, 50 VA, 115/24V		J14R03245-012			
13	AIR PRESSURE SWITCH		J11R02877-002			
14	*DRAFTOR RELAY		J10R03410			
14A	TERMINAL BLOCK PLATE		J09R04609			
15	HIGH LIMIT SWITCH W/ MOUNTING BRACKET		J11R04768			
16	FAN MOTOR (ODP)		J31R04766		J31R04091	
17	INLET AIR COLLAR ASS'Y		257R06621			
18	OSHA FAN GUARD		J32R04884		J32R04840	
19	STANDARD FAN		J34R04767-001		J34R04767-002	
20	FAN / GUARD / MOTOR MOUNT HARDWARE KIT		261R04963-001		261R04963-002	
21	**FLUE COLLECTOR		507R04696-030	507R04696-045	507R04696-060	507R04696-075
22	POWER VENTER (DRAFTER) ASS'Y		J35R04700			
23	FLUE COLLAR ASS'Y		507R04725			
24	VINYL TUBING (PRESSURE SWITCH)		507R04964-001			
25	POWER VENTER MOUNTING PLATE		507R04876			
26	LOUVER (QTY. REQ'D PER MODEL)		257R04587-011 (3)		257R04587-011 (5)	
27	LOUVER SPRINGS (QTY. REQ'D PER MODEL)		J26R01960 (3)		J26R01960 (5)	
28	BURNER BOX FRONT PANEL		251R06609		251R06610	
29	SERVICE PANEL		251R04718		251R04719	
30	HOSE CLAMP (2 PER UNIT)		J40R01745-014			
31	TOP / BOTTOM PANEL W / INSULATION		251R04702			
32	FRONT JACKET		251R04713		251R04714	
33	REAR / SIDE JACKET PANEL		251R06629		251R06630	
34	HANGER (FRONT AND REAR)		252R04730			
35	INLET AIR HOSE		H07R06627			
36	TUBE SUPPORT BRACKET KIT		261R06577-030	261R06577-045	261R06577-060	261R06577-075
37	METAL HOLE PLUG		J07R06593			
38	LARGE GROMMET		J07R02872-001			
39	SMALL GROMMET		J07R02872-004			
40	PIPE UNION		J40R00605-003			
41	PIPE NIPPLE		J40R00601-001			
42	SPRING		J26R06480			
43	PRESSURE TAP FITTING		J40R02876-001			
44	PRESSURE TAP FITTING NUT		J23R01130-017			
45	GROUND SCREW		J21R01287			
46	BURNER BOX VIEW PORT PANEL		251R06614		251R06615	
47	BURNER BOX INLET AIR PANEL (INCLUDES WIRE SEAL BRACKETS)		251R06616		251R06617	

## Notes:

\* A draftor relay is not required when your unit is equipped with a Honeywell SV9540 Gas Valve.

\*\* When replacing a flue collector, make sure that the flue collector box is sealed completely to the vestibule panel using RTV Sealant.

# MODELS "BTU" & "BRU" 30-90 MBH "LOW PROFILE" REPLACEMENT PARTS

Figure 1

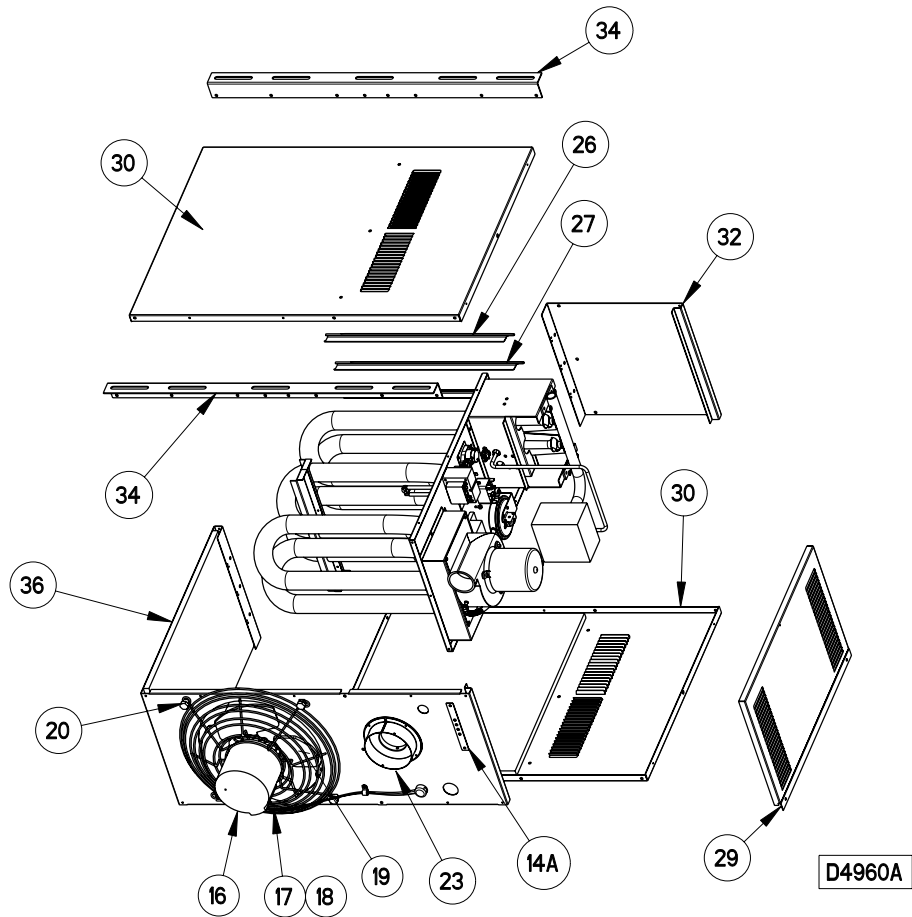
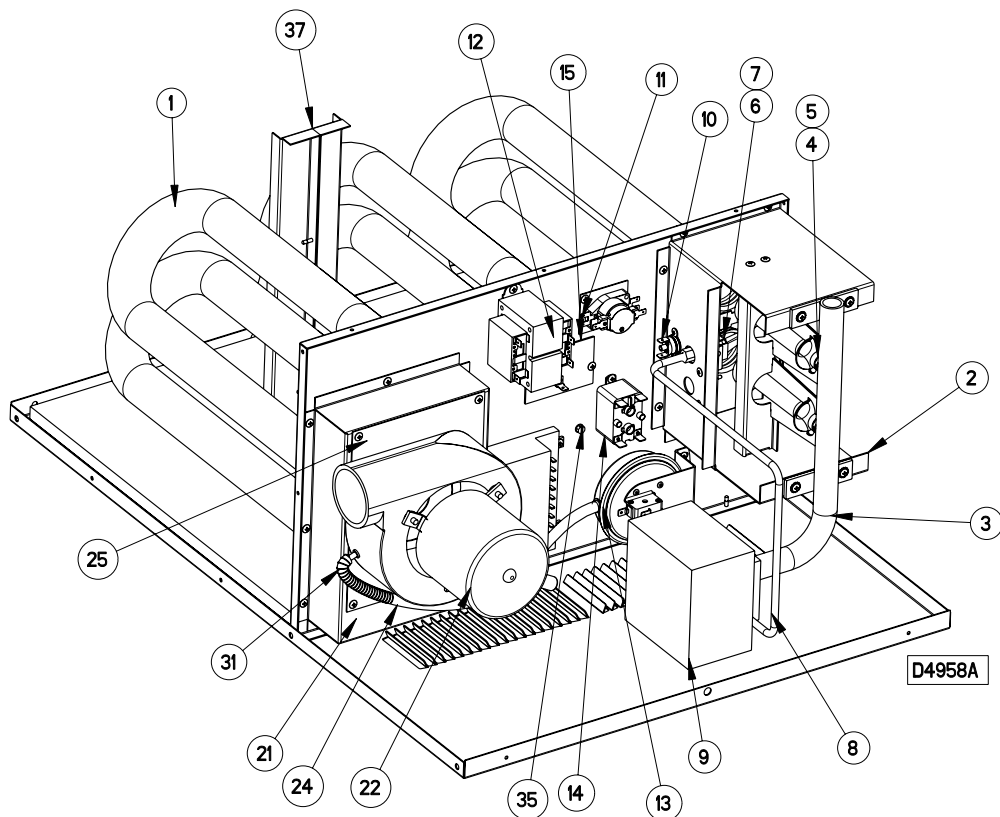


Figure 2



# MODELS “BTU/BRU” 30-90 MBH “LOW PROFILE” REPLACEMENT PARTS

ITEM NO.	“BTU”/“BRU” MODEL SIZE (MBH)		30	45	60	75	90
	ITEM DESCRIPTION		PART NO.				
	NO. OF TUBES, BURNERS ORIFICES REQ'D PER MODEL		2	3	4	5	
1	VESTIBULE PANEL/TUBE ASS'Y (HEAT EXCHANGER)		507R04672	507R04673	507R04674	507R04675	
2	MANIFOLD BRACKET SUB-ASS'Y		261R04961-030	261R04961-045	261R04961-060	261R04961-075	
3	MANIFOLD		J37R04684-030	J37R04684-045	J37R04684-060	J37R04684-075	
4	INSHOT BURNER		J37R04693				
5	STANDARD ORIFICE	NATURAL GAS	J36R04694-001				J36R04694-006
		PROPANE (LP) GAS	J36R04694-004				J36R04694-010
6	PILOT BURNER ASS'Y	NATURAL GAS	J38R03421-001				
		PROPANE, (LP) GAS	J38R03421-002				
7	PILOT MOUNTING BRACKET		252R04737				
8	PILOT TUBING		261R04962-001	261R04962-002	261R04962-001	261R04962-002	
9	HONEYWELL SV9500M GAS VALVE, SINGLE STAGE	NATURAL GAS	J28R05042-001 (Replacement Valve is a Honeywell SV9501 Series)				
		PROPANE (LP) GAS	J28R05042-002 (Replacement Valve is a Honeywell SV9501 Series)				
	HONEYWELL SV9540M GAS VALVE, SINGLE STAGE	NATURAL GAS	J28R04979-001				
		PROPANE (LP) GAS	J28R04979-002				
10	MANUAL ROLLOUT SAFETY SWITCH [RF UNIT TYPE ONLY]		J11R04849				
11	FAN TIME DELAY SWITCH		J11R00366				
12	TRANSFORMER, 50 VA, 115/24		J14R03245-012				
13	AIR PRESSURE SWITCH		J11R04927-001				J11R04927-002
14	*DRAFTOR RELAY		J10R03410				
14A	TERMINAL BLOCK PLATE		J09R04609				
15	HIGH LIMIT SWITCH W/ MOUNTING BRACKET		J11R04768				
16	FAN MOTOR (ODP)		J31R04766		J31R04091		
17	STANDARD FAN GUARD [TF MODELS]		J32R04723		253R01873-001		
18	OSHA FAN GUARD [REQ'D ON RF MODELS; OPT'L ON TF]		J32R04884		J32R04840		
19	STANDARD FAN		J34R04767-001		J34R04767-002		J34R01836-008
20	FAN/GUARD/MOTOR MOUNT HARDWARE KIT		261R04963-001		261R04963-002		
21	**FLUE COLLECTOR		507R04696-030	507R04696-045	507R04696-060	507R04696-075	507R04942-090
22	POWER VENTER (DRAFTER) ASS'Y		J35R04700				J35R04581
23	FLUE COLLAR ASSEMBLY		507R04725				507R04946
24	VINYL TUBING (PRESSURE SWITCH)		261R04964-001				
25	POWER VENTER MOUNTING PLATE		507R04876				N/A
26	LOUVER [QTY. REQ'D PER MODEL]		257R04587-011 [3]		257R04587-011 [5]		
27	LOUVER SPRING [QTY. REQ'D PER MODEL]		J26R01960 [3]		J26R01960 [5]		
29	SERVICE PANEL		251R04718		251R04719		
30	TOP/BOTTOM PANEL W/ INSULATION		251R04702				
31	SPRING (FOR VINYL TUBING)		J26R06480				
32	FRONT JACKET		251R04713		251R04714		
34	HANGER (FRONT AND REAR)		252R04730				
35	GROUND SCREW		J21R01287				
36	REAR/SIDE JACKET PANEL		251R06467		251R06468-001		251R06468-002
37	TUBE SUPPORT BRACKET KIT		261R06577-030	261R06577-045	261R06577-060	261R06577-075	

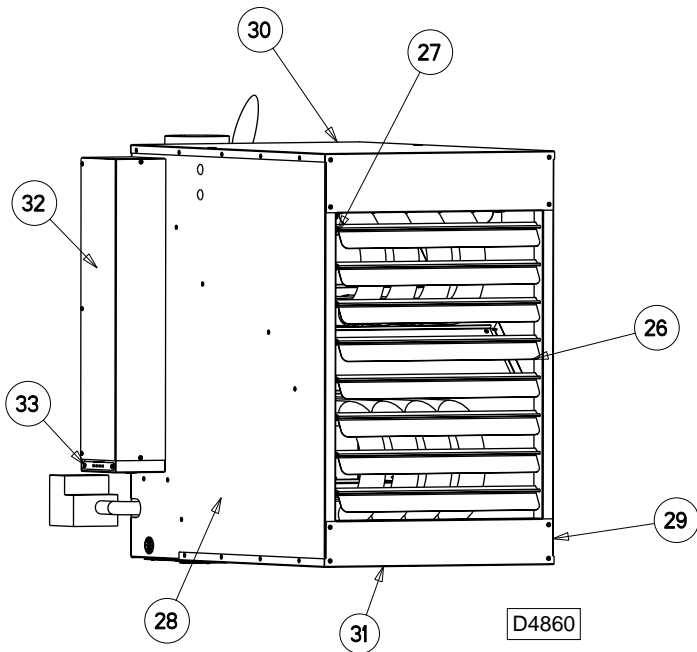
## Notes:

\* A drafter relay is not required when your unit is equipped with a Honeywell SV9540 or SV9640 Gas Valve (the relay function is built into the control).

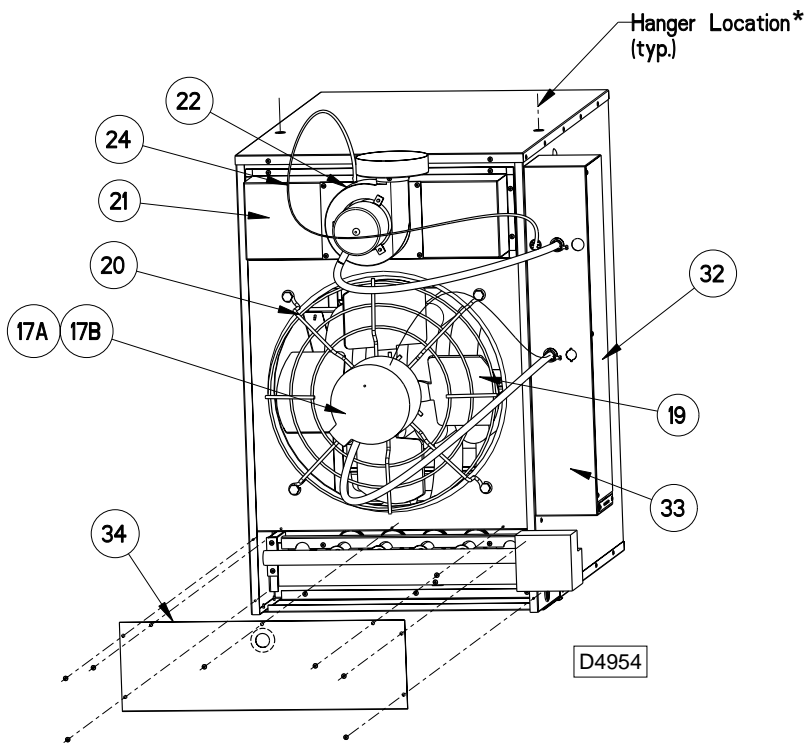
\*\* When replacing a flue collector, make sure that the flue collector box is sealed completely to the vestibule panel using RTV Sealant.

# MODEL "BTU" 100-400 MBH REPLACEMENT PARTS

### Figure 3

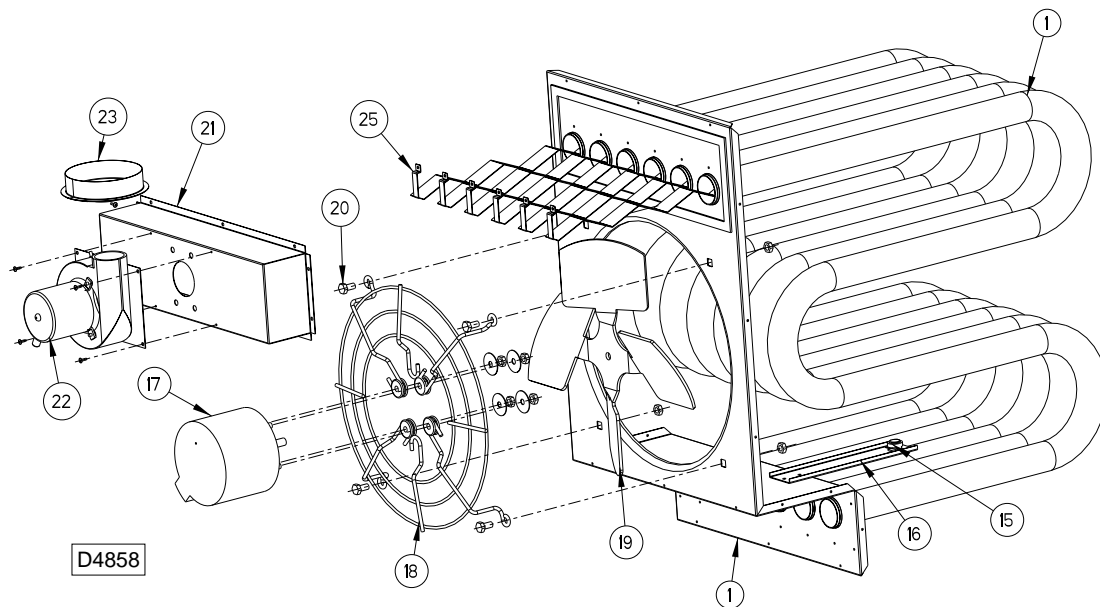


### Figure 4



\* 3/8-16 Threaded Rod recommended

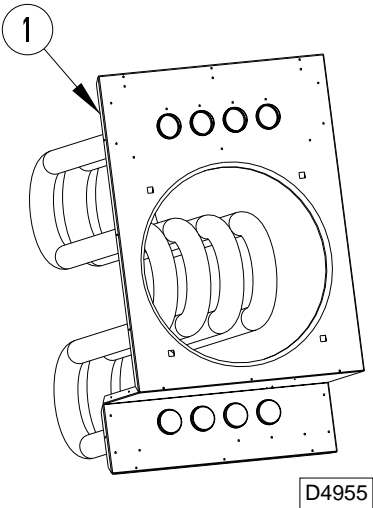
### Figure 5



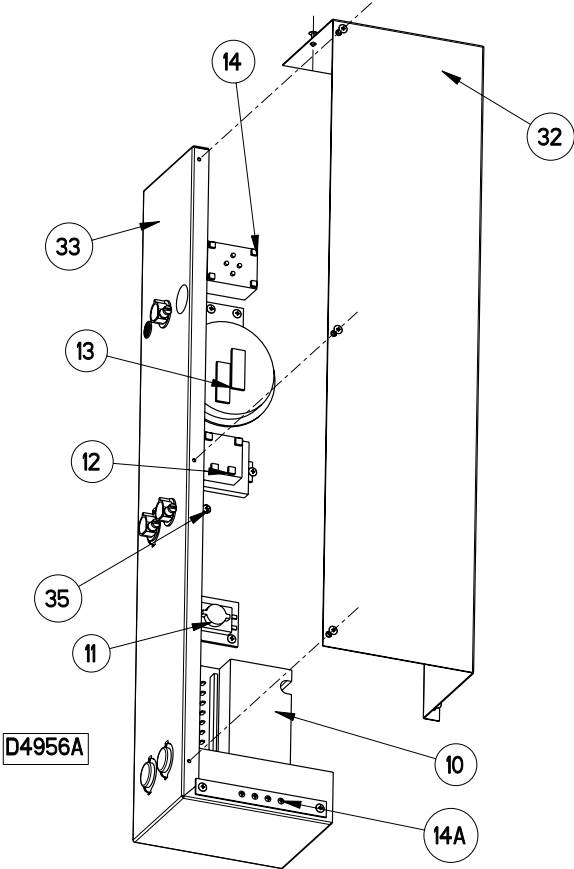


# MODEL “BTU” 100-400 MBH REPLACEMENT PARTS

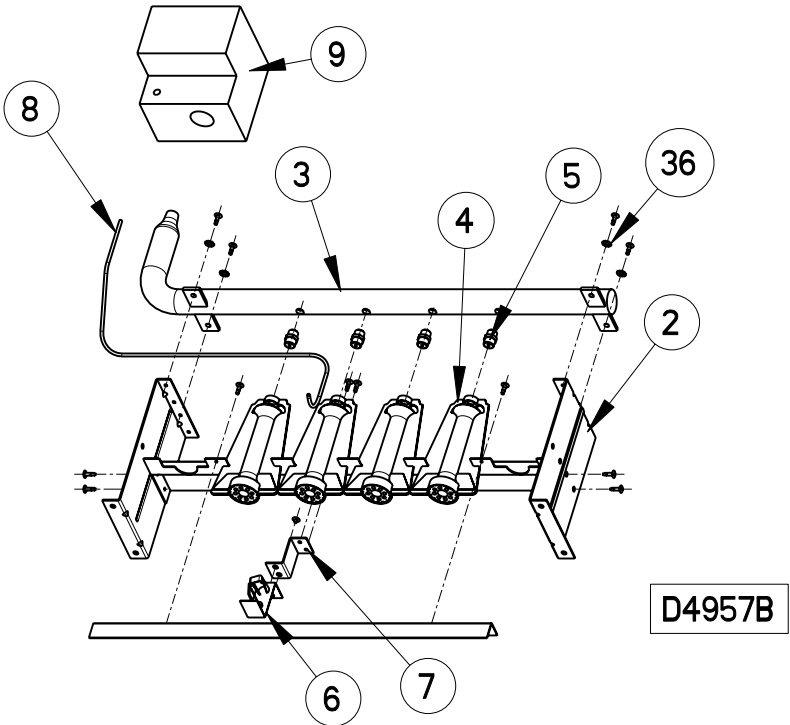
**Figure 6**  
**Vestible Panel/Tube Assembly**  
**(Heat Exchanger)**



**Figure 7**  
**Electrical Control Panel**



**Figure 8**  
**Manifold Burner Assembly**



# MODEL "BTU" 100-400 MBH REPLACEMENT PARTS

ITEM NO.	"BTU" MODEL SIZE (MBH)		100	125
	ITEM DESCRIPTION		PART NO.	
	NO. OF TUBES, TURBULATORS, BURNERS, ORIFICES REQ'D PER MODEL		4	5
1	VESTIBULE PANEL/TUBE ASS'Y (HEAT EXCHANGER)	ALUMINUM	507R04567-004	507R04568-004
		409 STAINLESS STEEL	507R04567-104	507R04568-104
2	MANIFOLD BRACKET SUB-ASS'Y		261R04965-004	
3	MANIFOLD		J37R04277	J37R04278
4	INSHOT BURNER		J37R03935	J37R03935
5	STANDARD ORIFICE	NATURAL GAS, #42	J36R03872-003	
		PROPANE (LP) GAS, #53	J36R03872-002	
6	PILOT BURNER ASS'Y	NATURAL GAS	J38R03421-001	
		PROPANE (LP) GAS	J38R03421-002	
		NATURAL GAS (WHITE-RODGERS VALVE)†	N/A	
7	PILOT MOUNTING BRACKET		252R03892	
8	PILOT TUBING		261R04962-003 [Lgth. = 24 in.]	
9	HONEYWELL SV(9500/9600)	NATURAL GAS	J28R05042-001	
	GAS VALVE, SINGLE STAGE	PROPANE (LP) GAS	J28R05042-002 (Replacement Valve is a SV9501 Series)	
	HONEYWELL SV(9540/9640)	NATURAL GAS	J28R04979-001	
	GAS VALVE, SINGLE STAGE	PROPANE (LP) GAS	J28R04979-002	
	WHITE-RODGERS GAS VALVE, SINGLE STAGE†	NATURAL GAS	N/A	
10	IGNITOR, NATURAL GAS		N/A	
11	FAN TIME DELAY SWITCH		J11R00366	
12	TRANSFORMER, 50 VA, 115/24		J14R03245-012	
13	AIR PRESSURE SWITCH		J11R04927-001	
14	*DRAFTOR RELAY		J10R03410	
14A	TERMINAL BLOCK PLATE		J09R04609	
15	HIGH LIMIT SWITCH [QTY. REQ'D PER MODEL]		J11R00306-002 [1]	
16	HIGH LIMIT BRACKET [QTY. REQ'D PER MODEL]		252R04469 [1]	
17A	FAN MOTOR (100/400 MODELS) (ODP) 24" and 28" wire leads only		J31R04092	J31R04093-001
17B	FAN MOTOR (300,350 & 400 MODELS ONLY) (ODP) 52" wire lead only		N/A	
18	STANDARD FAN GUARD [QTY. REQ'D PER MODEL]		253R01873-001 [1]	
	OSHA FAN GUARD [QTY. REQ'D PER MODEL]		J32R04840 [1]	
19	STANDARD FAN [QTY. REQ'D PER MODEL]		J34R05944 [1]	J34R05945 [1]
20	FAN/GUARD/MOTOR MOUNT HARDWARE KIT [QTY. REQ'D PER MODEL]		261R04963-002 [1]	
21	**FLUE COLLECTOR		507R03918-004	507R03918-005
22	***POWER VENTER (DRAFTER) ASS'Y		J35R04700	
23	FLUE COLLAR ASSEMBLY		257R05062	
24	VINYL TUBING (PRESSURE SWITCH)		261R04964-002	
25	TURBULATOR		501R03893	
26	LOUVER [8 REQ'D PER MODEL]		257R04587-008	
27	LOUVER SPRING [8 REQ'D PER MODEL]		J26R01960	
28	RIGHT SIDE JACKET PANEL W/ INSULATION		261R04966	
29	LEFT SIDE JACKET PANEL W/ INSULATION		261R04967	
30	TOP JACKET PANEL W/ INSULATION		261R04968-004	
31	BOTTOM JACKET PANEL W/ INSULATION		261R04969-004	
32	ELECTRICAL CONTROL BOX COVER		257R03888	
33	ELECTRICAL CONTROL BOX BASE (WRAPPER)		257R03889	
34	PEEP HOLE BURNER COVER ASSEMBLY		261R05411-004	
35	GROUND SCREW		J21R01287	
36	WASHER (4 PER UNIT)		J24R00326-005	

## Notes:

\* A draftor relay is not required if your unit is equipped with a Honeywell SV9450 or SV9640 Gas Valve (the relay function is built into the control).

\*\* When replacing a flue collector, make sure that the flue collector box is sealed completely to the vestibule panel using RTV Sealant.

\*\*\* Unit sizes 100, 125, 150 require power vent mounting plate 507R04876.

† For units manufactured prior to June 13, 2001 (sizes 350 and 400 only).

# MODEL “BTU” 100-400 MBH REPLACEMENT PARTS

150	175	200	250	300	350	400	ITEM NO.
PART NO.							
6	7	8	10	12	14	16	
507R04569-004	507R04570-004	507R04571-004	507R04572-004	507R04573-004	507R04574-004	507R04575-004	1
507R04569-104	507R04570-104	507R04571-104	507R04572-104	507R04573-104	507R04574-104	507R04575-104	
261R04965-004	261R04965-007			261R04965-012			2
J37R04278	J37R04279	J37R04279	J37R04280	J37R04281	J37R04282	J37R04283	3
J37R03935	J37R03935	J37R03935	J37R03935	J37R03935	J37R03935	J37R03935	4
J36R03872-003							5
J36R03872-002							
J38R03421-001							6
J38R03421-002							
N/A					J38R04578-001		
252R03892							
261R04962-003 [Lgth. = 24 in.]				261R04962-004 [Lgth. = 28 in.]			7
261R04962-003 [Lgth. = 24 in.]				261R04962-004 [Lgth. = 28 in.]			8
J28R05042-001...	J28R05043-003 (Replacement Valve is a SV9601 Series)				N/A		9
J28R05042-002...	J28R05043-002 (Replacement Valve is a SV9601 Series)				J28R05043-004		
J28R04979-001	J28R04980-003				J28R04980-003		
J28R04979-002	J28R04980-002 (1/2" x 3/4") or J28R04980-004 (3/4" x 3/4")				J28R04980-004		
N/A				J28R00742			
N/A				J28R02722		10	
J11R00366							11
J14R03245-012							12
J11R04927-001	J11R04927-002			J11R04927-001			13
J10R03410							14
J09R04609							14A
J11R00306-002 [1]				J11R00306-002 [2]			15
252R04469 [1]				252R04469 [2]			16
J31R04093-001	J31R04094-001			J31R04093-001	J31R04094-001		17A
N/A				J31R04093-002	J31R04094-002		17B
253R01873-001 [1]	253R01874-001 [1]			253R01873-001[2]	253R01874-001 [2]		18
J32R04840 [1]	J32R04843 [1]			J32R04840 [2]	J32R04843 [2]		
J34R05945 [1]	J34R05946 [1]			J34R05945 [2]	J34R05946 [2]		19
261R04963-002 [1]				261R04963-002 [2]			20
507R03918-006	507R03920-007	507R03920-008	507R03920-010	507R03922-012	507R03922-014	507R03922-016	21
J35R04700	J35R04581			507R04595			22
257R05062	507R04532			507R04600			23
261R04964-002	261R04964-003			261R04964-004			24
501R03893							25
257R04587-008	257R04587-009			257R04587-010			26
J26R01960							27
261R04966							28
261R04967							29
261R04968-004	261R04968-007			261R04968-012			30
261R04969-004	261R04969-007			261R04969-012			31
257R03888							32
257R03889							33
261R05411-004	261R05411-007			261R05411-012			34
J21R01287							35
J24R00326-005							36

# MODEL “BTU/BRU” REPLACEMENT PARTS

“BTU”/“BRU” FIELD INSTALLED OPTIONS AND THERMOSTATS	
DESCRIPTION	PART NO.
PRESSURE REGULATOR (125 PSI TO 7") NATURAL GAS	J28R05121
T87F 1-STAGE	J13R00812
Q539A-1006 SUBBASE FOR T87F	J13R01284-001
T834H 1-STAGE W/FAN SWITCH (STERLING LOGO)	J13R02081
T874F 2-STAGE	J13R00814
Q674C-1009 SUBBASE FOR T874F	J13R00813
T6169C 1-STAGE LINE VOLTAGE (115V) W/SUBBASE	J13R03362
T822D 1-STAGE	J13R00811
TG500A-1045 UNIVERSAL THERMOSTAT GUARD	J13R00954
TG503-1000 METAL GUARD W/LOCKING COVER FOR T87F WITHOUT SUBBASE	J13R01383
24V SPST RELAY	J10R00818-003
VENT CAP 4"	J37R02222-001
VENT CAP 5"	J37R02222-002
VENT CAP 6"	J37R02222-003
30 DEGREE NOZLE KIT (100-150)	ASRX2-001
30 DEGREE NOZZLE KIT (175-250)	ASRX2-002
30 DEGREE NOZZLE KIT (300-400)	ASRX2-003
60 DEGREE NOZZLE KIT (100-150)	ASRX3-001
60 DEGREE NOZZLE KIT (175-250)	ASRX3-002
60 DEGREE NOZZLE KIT (300-400)	ASRX3-003
90 DEGREE NOZZLE KIT (100-150)	ASRX4-001
90 DEGREE NOZZLE KIT (175-250)	ASRX4-002
90 DEGREE NOZZLE KIT (300-400)	ASRX4-003
VERTICAL LOUVER KIT (BTU100-150)	ASRX5-004
VERTICAL LOUVER KIT (BTU175-250)	ASRX5-007
VERTICAL LOUVER KIT (BTU300-400)	ASRX5-012
HIGH ALTITUDE* PRESSURE SWITCH (30, 45, 60, 75, 100, 125, 150, 300, 350, 400)	J11R05597-001
HIGH ALTITUDE* PRESSURE SWITCH (90, 175, 200, 250)	J11R05597-002
VERTICAL CONCENTRIC VENT KIT (BST UNITS ONLY)	ASRM4
HORIZONTAL CONCENTRIC VENT KIT (BST UNITS ONLY)	ASRM5

*\*For units operating at elevations of 5,000-11,999 ft.*

# TERMS

**ALL SHIPMENTS ARE F.O.B. FARMVILLE, N.C.**  
**FREIGHT ROUTING SHALL BE AT THE DISCRETION OF THE SHIPPER**

**PRICES:** Published trade prices in effect at time of receipt of order at our office are firm provided the complete order is released for fabrication and shipment within 6 months from date of receipt of written order at the factory. Releases for shipment after 6 months will be billed on the basis of trade prices in effect at time of release.

No obligation is assumed by this Corporation to sell, to anyone holding this book, any of the items listed herein at the prices stated.

**TERMS:** Net 30 Days.

Prepaid freight or cartage charges paid by us and added to invoice are not subject to cash discount.

**TAXES:** The prices listed herein exclude Federal, State, or Municipal Tax applicable to the transaction. Such taxes, where applicable to the transaction should be paid directly to the governing authority by the Purchaser.

**CLAIMS:** As all goods are shipped at buyer's risk they should be examined carefully before signing transportation delivery receipts. If transportation company tenders delivery of goods in bad order, buyer should insist on transportation agent making notation of conditions on delivery receipt and request an inspection within 48 hours, thus enabling buyer to secure prompt payment of transportation claims filed by him for value of damaged material.

The responsibility of this company ceases upon delivery of goods in order to transportation companies. All orders are accepted subject to delays on account of government requirements, strikes, accidents or other causes beyond our control.

**MINIMUM ORDERS:** Orders with an invoice value of less than \$35.00 will be invoiced at \$35.00.

**RETURNED GOODS:** Goods must not be returned except by written permission from the factory, and when so returned will be accepted only as stated in the following conditions:

1. Special material is not subject to return.
2. All transportation charges for returned goods must be prepaid by shipper.
3. Standard catalogued products may be returned upon written permission. After inspection at the factory, if they are found to be in good condition they will be accepted for credit, subject to a 25% handling charge.
4. No goods will be accepted for return more than 90 days after shipment.

**CHANGES TO A RELEASED ORDER** – Work commences on release of an order, therefore, an order that is changed will be subject to additional charges for any extra time and material expended.

## LIMITED WARRANTY

The product described in this catalog are warranted by Beacon-Morris, A Mestek Co. to be free from defects in material and workmanship for a period of one (1) year from the date of shipment from Beacon-Morris' plant.

Beacon-Morris will repair or replace, at its option, any components which, upon inspection, it finds to be defective, provided that the unit has been operated within its listed capacity, has been installed in accordance with the furnished instructions, has not been misused or subject to negligence and has received reasonable and necessary maintenance. This warranty does not cover labor costs or other cost incurred in repairing, removing, installing, servicing or handling of parts or complete products.

Beacon-Morris will in no event be liable for incidental or consequential damages of any kind whatsoever.

The buyer must request written permission from Beacon-Morris to return defective components and then must send them with all transportation charges prepaid to the plant designated in the written permission.

This warranty is extended only to the original purchaser from Beacon-Morris.







260 North Elm Street  
Westfield, MA 01085  
Tel. (413) 562-5423  
Fax (413) 572-3764



5211 Creekbank Road  
Mississauga, Ontario L4W 1R3 Canada  
Tel. (905) 625-2991  
Fax (905) 625-6610



A MESTEK COMPANY  
[www.beacon-morris.com](http://www.beacon-morris.com)