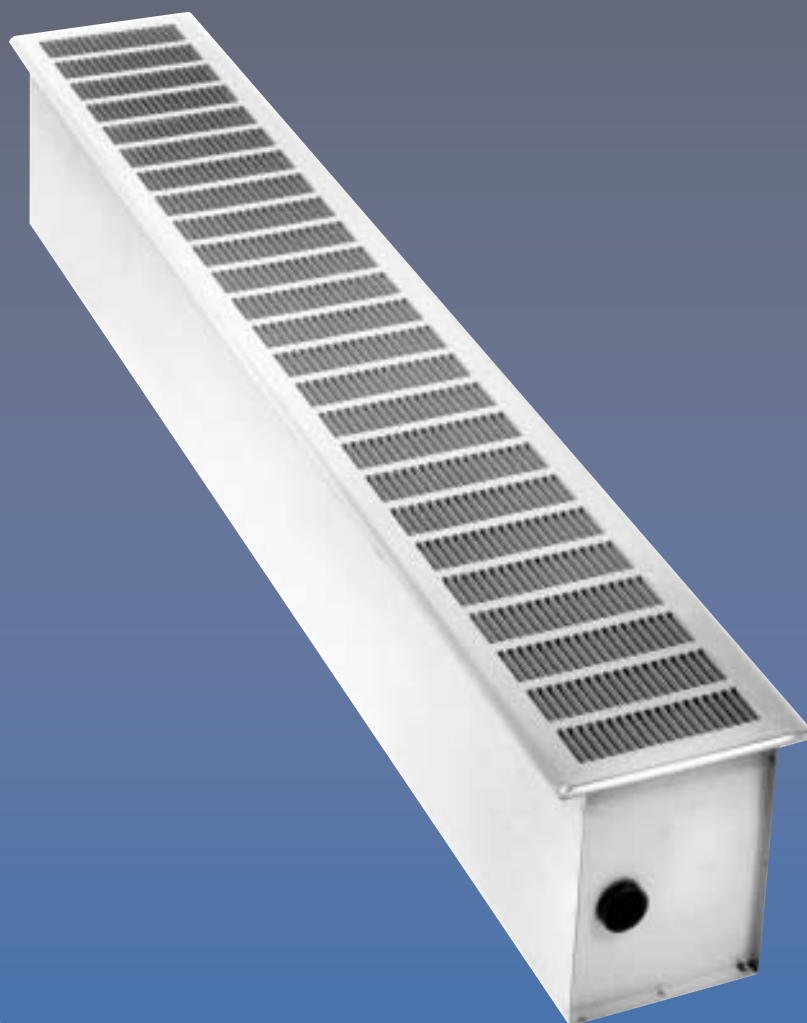


FLOOR VECTOR

For Under-The-Window In-Floor Heat

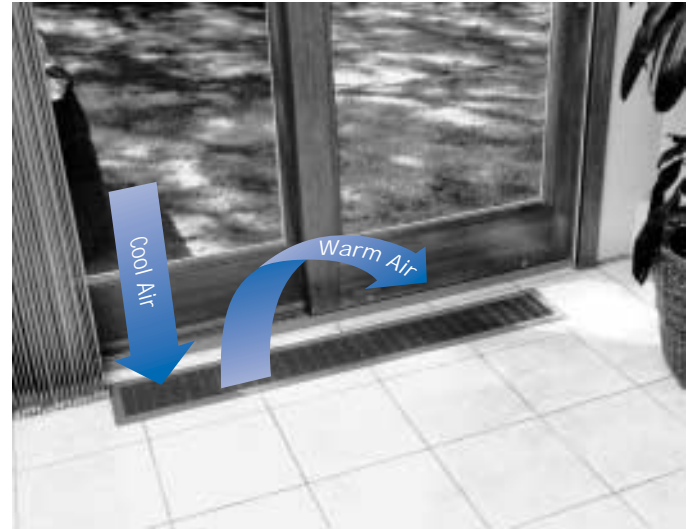


bmm
Beacon/Morris®

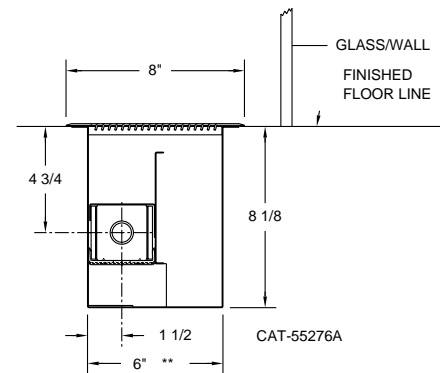
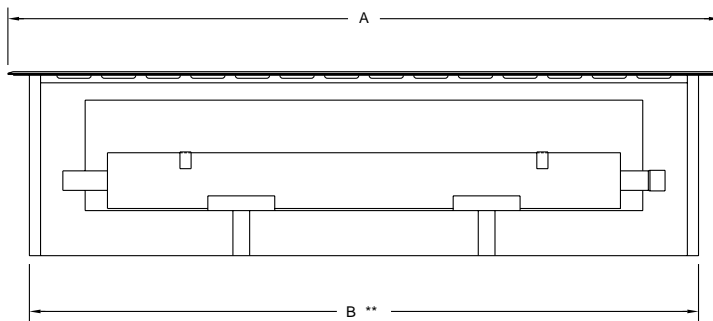
The Beacon/Morris Floor Vector

The Beacon-Morris Floor Vector makes use of the natural flow of cold air that "falls off" a window or sliding glass door, heats it with a finned hydronic heating element and then circulates warm air into the room by natural convection. The unit fits easily and unobtrusively into wood or concrete slab floors or interior window ledges and takes the chill out of the traditional cold zone associated with large areas of glass. It is available in three different lengths, making it possible to match a single unit to various sliding door or window widths.

A rust-resistant galvanized steel cabinet, a strong single piece heavy gauge steel grille, a finned heating element and air baffle comprise the entire unit. The floor grille is finished in a neutral "Cameo White" finish and can be lifted off easily for cleaning.



Dimensional Data



| MODEL | A | B ** |
|-------|-----|------|
| FV-3 | 40" | 39" |
| FV-4 | 52" | 51" |
| FV-5 | 64" | 63" |

** ADD 1/4 TO THESE DIMENSIONS FOR FLOOR OPENING.

Ratings

| Model | Water Flow (GPM) | Average Water Temperature (°F) - Btu/Hr Total | | | | | | | Press. Drop (millinches) | Shipping Weight |
|-----------------|------------------|---|------|------|------|------|------|------|--------------------------|-----------------|
| | | 150° | 160° | 170° | 180° | 190° | 200° | 210° | | |
| FV-3 (3 ft.) | 1 | 1245 | 1435 | 1640 | 1840 | 2045 | 2250 | 2455 | 141 | 26 lbs. |
| | 4 | 1320 | 1515 | 1725 | 1940 | 2160 | 2375 | 2590 | 1575 | |
| FV-4 (4 ft.) | 1 | 1660 | 1910 | 2185 | 2455 | 2725 | 3000 | 3270 | 188 | 32 lbs. |
| | 4 | 1760 | 2020 | 2300 | 2590 | 2880 | 3165 | 3455 | 2100 | |
| FV-5 (5 ft.) | 1 | 2075 | 2390 | 2730 | 3070 | 3410 | 3750 | 4090 | 235 | 41 lbs. |
| | 4 | 2200 | 2530 | 2880 | 3240 | 3600 | 3960 | 4320 | 2625 | |

Note: Based on 65° entering air temperature.

In the interest of product improvement, we reserve the right to make changes without notice.



BFV-4R

260 North Elm Street, Westfield, MA 01085 • Tel: (413) 562-5423 • Fax: (413) 562-8437
5211 Creekbank Road, Mississauga, Ontario L4W 1R3 Canada • Tel: (905) 625-2991 • Fax: (905) 625-6610
www.beacon-morris.com

 A MESTEK COMPANY